

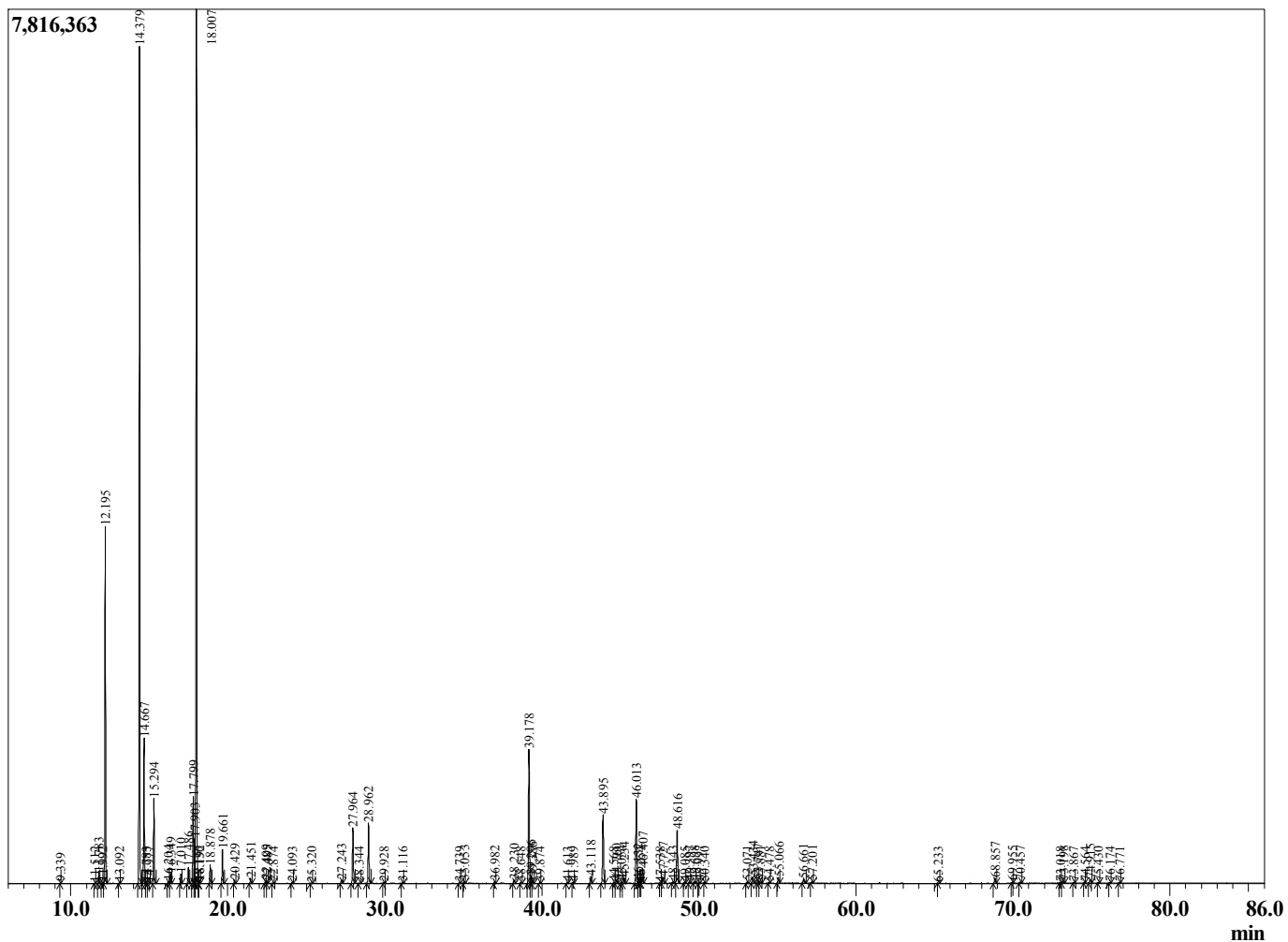
Sample Information

Sample Type : Essential Oil
 Sample Name : Vitex agnus castus

Chaste Tree Fruit
 Lot# CRR16-RW
 Country: Croatia



Chromatogram Vitex agnus castus



R.Time	Name	Area%
9.339	Isopentyl acetate	0.02
11.512	Hashishene	0.01
11.783	alpha-Thujene	0.28
11.992	2-Hexyl acetate	0.02
12.195	alpha-Pinene	9.61
13.092	Camphene	0.03
14.379	Sabinene	24.82
14.667	beta-Pinene	4.11
14.783	Unidentified	0.03
14.977	Unidentified	0.02
15.294	Myrcene	2.45
16.204	Pseudolimonene	0.08
16.349	alpha-Phellandrene	0.29
17.010	alpha-Terpinene	0.28
17.486	para-Cymene	0.49
17.799	Limonene	2.90
17.903	beta-Phellandrene	1.17
18.007	1,8-Cineole	28.66
18.136	2,2,6-Trimethylcyclohexanone	0.04
18.192	cis-beta-Ocimene	0.04
18.878	trans-beta-Ocimene	0.58
19.661	gamma-Terpinene	1.09
20.429	trans-Sabinene hydrate	0.12
21.451	Terpinolene	0.17
22.409	Linalool	0.09
22.485	cis-Sabinene hydrate	0.08
22.874	Isoamyl isovalerate	0.03
24.093	cis-para-Menth-2-en-1-ol	0.04
25.320	trans-para-Menth-2-en-1-ol	0.03
27.243	delta-Terpineol	0.12
27.964	Terpinen-4-ol	1.92
28.344	Cryptone	0.03
28.962	alpha-Terpineol	2.15
29.928	Unidentified	0.03
31.116	Citronellol	0.04
34.739	Unidentified	0.03
35.053	Bornyl acetate	0.08
36.982	delta-Terpinyl acetate	0.06
38.230	delta-Elementene	0.15
38.648	Unidentified	0.04
39.178	alpha-Terpinyl acetate	5.14
39.296	gamma-Terpinyl acetate	0.29
39.386	Citronellyl acetate	0.21
39.874	Unidentified	0.05
41.613	beta-Bourbonene	0.03
41.989	beta-Elementene	0.03
43.118	alpha-Gurjunene	0.27
43.895	beta-Caryophyllene	2.79
44.568	beta-Copaene	0.03
44.760	trans-alpha-Bergamotene	0.13
45.054	Unidentified	0.05
45.234	cis-beta-Farnesene	0.22
46.013	trans-beta-Farnesene	3.18
46.132	alpha-Humulene	0.13
46.254	Unidentified	0.02
46.407	Alloaromadendrene	0.62

R.Time	Name	Area%
47.538	gamma-Curcumene	0.02
47.727	Germacrene D	0.25
48.343	Valencene	0.05
48.616	Bicyclogermacrene	2.14
49.085	Unidentified	0.04
49.397	beta-Bisabolene	0.06
49.698	Unidentified	0.08
49.997	delta-Cadinene	0.05
50.340	beta-Sesquiphellandrene	0.02
53.071	Palustrol	0.08
53.434	Spathulenol	0.26
53.747	Caryophyllene oxide	0.14
53.881	Unidentified	0.09
54.478	Viridiflorol	0.02
55.066	Ledol	0.22
56.661	Unidentified	0.19
57.201	alpha-Muurolol (=Torreyol)	0.07
65.233	Unidentified	0.02
68.857	Unidentified	0.21
69.955	Unidentified	0.06
70.457	Unidentified	0.06
73.018	Unidentified	0.04
73.198	Unidentified	0.08
73.867	Unidentified	0.03
74.564	Unidentified	0.02
74.915	Unidentified	0.17
75.430	Unidentified	0.03
76.174	Unidentified	0.02
76.771	Unidentified	0.04
		100.00